



INTAKE SYSTEMS FOR VEHICLES LISTED ARE 50 STATE LEGAL. SEE KNFILTERS.COM FOR CARB STATUS ON EACH PART FOR A SPECIFIC VEHICLE.

# INSTALLATION INSTRUCTIONS

## 57-3038

### CHEVROLET / GMC

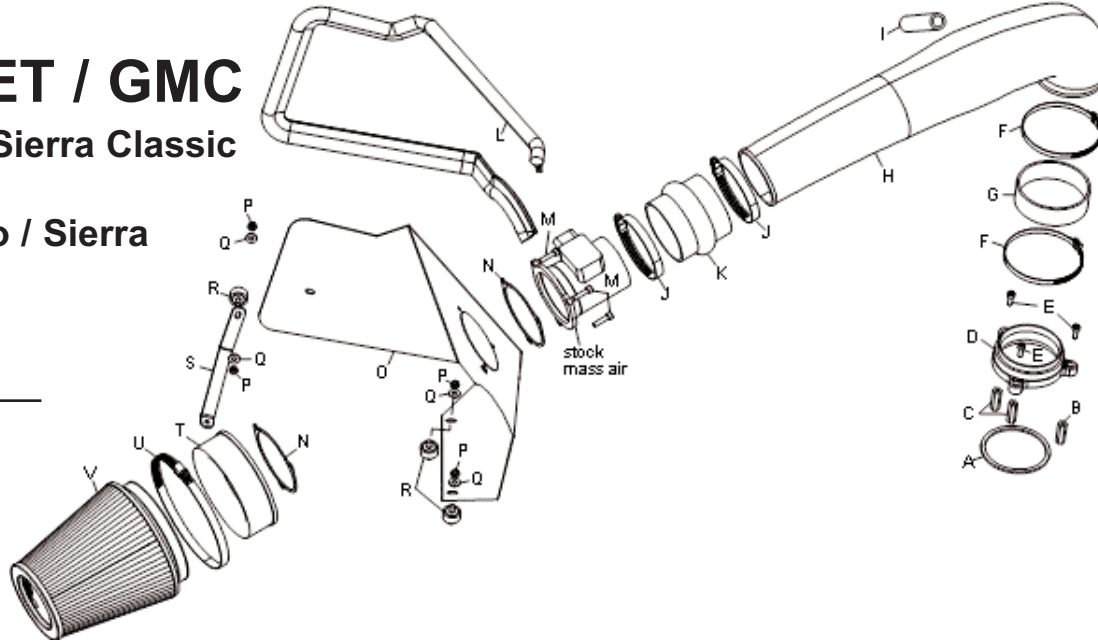
2007 Silverado / Sierra Classic  
1500

1999-06 Silverado / Sierra  
V6-4.3L

NOTE: This kit was not designed to fit vehicles with a body lift.

#### TOOLS NEEDED:

- Screw Driver
- 5/32 Allen
- 5mm Allen
- 7/32 Socket
- 5/16 Wrench
- 7/16 Wrench
- 10mm Wrench
- 11mm Wrench
- 13mm Wrench
- Ratchet
- Extension



#### PARTS LIST:

Desc.	Qty.	Part #
A Gasket, 1/8" Neoprene	1	09766
B Nut, Coupling	1	07522
C Nut, Coupling	2	08254
D Adapter, Throttle Body	1	08799
E 5mm -.80 x 20mm Allen Bolt	3	08320
F Hose Clamp #64	2	08650
G Silicone Hose	1	08755
H Intake Tube	1	087091
I Silicone Hose 5/8" id x 5" l	1	08538
J Hose Clamp #56	2	08620
K Silicone Hump Hose	1	08176
L Edge Trim 48"L	1	102485
M 6mm-1.00 x 16mm Allen Bolt	3	07818
N Gasket (Mass Air)	2	09033
O Heat Shield	1	074040
P Nut 6mm Nylock	4	07553
Q Washer 1/4" id x 5.8" OD Flat	4	08275
R Stud; 6mm rubber mntd	3	07027
S Bracket, c-bend	1	070822
T Filter Adapter #240	1	08783
U Hose Clamp #104	1	08697
V Air Filter	1	RF-1041

**NOTE: FAILURE TO FOLLOW INSTALLATION INSTRUCTIONS AND NOT USING THE PROVIDED HARDWARE MAY DAMAGE THE INTAKE TUBE, THROTTLE BODY AND ENGINE.**

#### TO START:

1. Turn the ignition OFF and disconnect the vehicle's negative battery cable.



2. Disconnect the mass air sensor electrical connection.



3. Loosen the hose clamp at the mass air sensor as shown.



4. Disconnect the crank case vent hose from the factory air intake tube.



5. Loosen and remove the tall wing nut on the throttle body.



6. Remove the factory intake tube from vehicle as shown.



7. Pull firmly upward and remove airbox from vehicle.

NOTE: K&N recommends that customers do not discard factory air intake.



8. Using a 7/32" socket, loosen and remove the factory stud off from the throttle body.



9. Using a 5/16" wrench, remove the factory bolt from the stand off and reinstall the factory bolt in its original location.



10. Hand tighten the three provided coupling nuts on the original throttle body studs.



11. Install the neoprene gasket provided onto the throttle body flange.



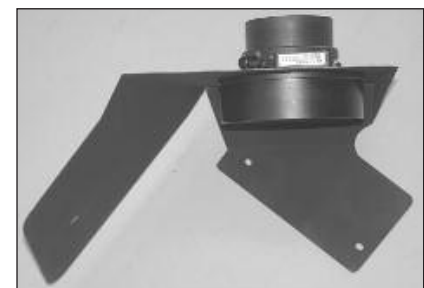
12. Install the aluminum throttle body adapter and hand start the three 6mm bolts.



13. Using a 7/16" wrench, snug the three coupling nuts and tighten the three 6mm bolts using a 5mm wrench.



14. Loosen the hose clamp and remove the mass air sensor from the airbox.



15. Assemble the mass air sensor, heat shield and adapter using the gasket and hardware provided.



16. Install the trim seal onto the heat shield as shown.  
NOTE: Some cutting and trimming may be necessary to achieve best fit.



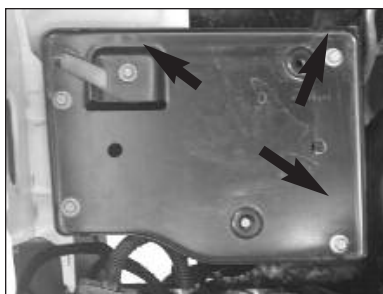
17. Attach the rubber mounted stud to the "C" bracket.

**NOTE: Do not tighten completely at this time.**



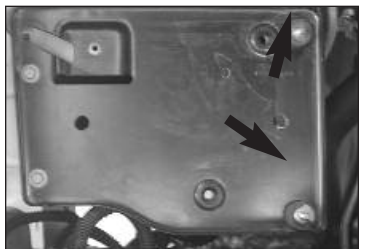
18. Attach the "C" bracket assembly to the heat shield as shown.

**NOTE: Do not tighten completely at this time.**



19. Loosen and remove the three bolts on the air box mounting tray.

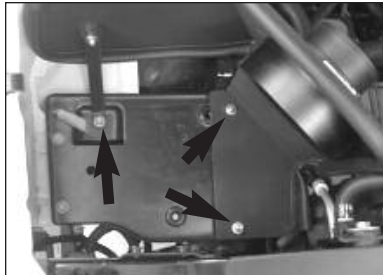
**NOTE: One of these bolts will be reused.**



20. Install the two rubber mounted stud into the threaded holes in the air box mounting tray as shown.



21. Install the heat shield assembly.



22. Secure the "C" bracket to the threaded hole in the air box mounting tray using the bolt removed in step #19, then secure the heat shield to the rubber mounted studs installed in step #20 with the hardware provided.



23. Install the silicone hose (08755) over the throttle body adapter and tighten using the provided midi hose clamp.



24. Install the silicone hose (08176) onto the mass air sensor with the provided hose clamp.



25. Remove the 90 deg rubber hose from the vent tube as shown.



26. Fully install the new K&N intake tube onto the throttle body and mass air sensor as shown. Then tighten the provided hose clamps.



27. Connect the crank case vent to the new intake tube with the provided silicone hose.



28. Install the Air Filter element onto the intake tube then secure with hose clamp.



29. Reconnect the mass air sensor electrical connections.



30. Reconnect the vehicle's negative battery cable. Double check to make sure everything is tight and properly positioned before starting the vehicle.

31. The C.A.R.B. exemption sticker, (attached), must be visible under the hood so that an emissions inspector can see it when the vehicle is required to be tested for emissions. California requires testing every two years, other states may vary.

32. **NOTE:** Most General Motors vehicles have the Vehicle Emissions Certification Information (VECI) label affixed to the air filter box. In order to be compliant with California emissions laws, the label **MUST** remain in the engine compartment. If the Vehicle Emission Control Information label is removed during modification, a new replacement label must be obtained and installed in a readily visible position in the engine compartment. The label shall not be affixed to any equipment which is easily detached from the vehicle. We recommend that the label is affixed to the underside of the hood adjacent to the hood latch. The label is Vehicle Identification Number dependent and can be ordered from the vehicle dealership. In order to receive the proper decal please bring your VIN with you. Failure to have the VECI under the hood may result in failure of a pre-registration smog test.

33. It will be necessary for all FIPK's to be checked periodically for realignment, clearance and tightening of all connections. Failure to follow the above instructions or proper maintenance may void warranty.

#### ROAD TESTING:

1. Start the engine with the transmission in neutral or park, and the parking brake engaged. Listen for air leaks or odd noises. For air leaks secure hoses and connections. For odd noises, find cause and repair before proceeding. This kit will function identically to the factory system except for being louder and much more responsive.

2. Test drive the vehicle. Listen for odd noises or rattles and fix as necessary.

3. If road test is fine, you can now enjoy the added power and performance from your kit.

4. K&N suggests checking the Filtercharger element periodically for excessive dirt build-up. When the element becomes covered in dirt (or once a year), service it according to the instructions on the Recharger service kit, part number 99-5050 or 99-5000.

**INTAKE SYSTEMS FOR VEHICLES LISTED ARE 50 STATE LEGAL. SEE KNFILTERS.COM FOR CARB STATUS ON EACH PART FOR A SPECIFIC VEHICLE.**